

Applying and removing of non adhesive panoRama products with panoRama Tape

This information is based on our knowledge and experience. Not all aspects which have to be considered for application will be explained. Specialized and occupational knowledge and competence of a professional signmaker are presupposed. Due to the diversity of influencing factors during application and use we recommend to make own tests of our products by customers who wish to use the material for special applications. No legal binding warranty of certain qualities can be derived from our information.

The **non-adhesive panoRama** products are easy to apply and to remove on the window. Installation is simple if you use the recommended tools and follow a few basic rules. If you follow this instruction you will enjoy using products from Continental Grafix. Please consider the recommendations of this instruction guide carefully.

SOME BASIC ADVICES

SUBSURFACES: **Non-adhesive panoRama** window film is only suitable for smooth surfaces. Therefore glass is the most appropriate subsurface to work with. All other surfaces have to be tested prior to application.

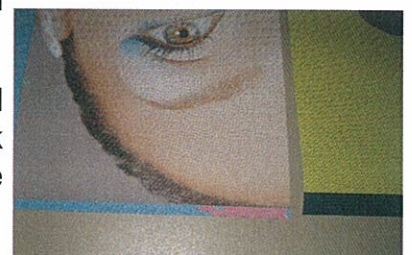
CLEANING: Subsurface must be clean. Use soap and water only to clean glass. The surface must be completely free of grease and dust. After cleansing the surface needs to get dry. In order to dry the surface either use brown industrial paper or other material without any particles on it. Don't forget the angles of the window.

PRINTING: The panoRama Film is equipped with a self adhesive liner with polyester backing. The liner has to be removed after printing. Please switch off the preheating system when printing with solvent inks.

The liner shall be removed after the print when the perforated film is completely dry (recommended waiting period: 24 – 48 hours prior to application with **panoRama Tape**). When removing the liner, please take care that the self adhesive liner isn't coming in touch with other materials, especially not with the printed front side.

In order to prevent the surface to become dirty it is recommended to work with gloves at all times. This also helps to avoid having a grease film on the surface which could lead to a negative impact on the tack between panoRama Film and **panoRama Tape**.

According to the colours of the print (especially light coloured prints) you may print a 2,5 cm stripe in black or the same dark colour than the frame of the window at the bottom and at the top of the print image.



Applying and removing of non adhesive *panoRama* products with *panoRama Tape*

MOUNTING

panoRama Tape is an ultra-clear transparent double-face tape. The application has to be made on the prior printed side of the *non-adhesive panoRama* product. Be sure ink on print is completely dry prior to applying *panoRama Tape*.

panoRama Tape is very easy to apply, the product is aimed to be applied manually:

Lay the *non-adhesive panoRama* product print face up on table surface.

Make sure the backing liner of the perforated window film is already removed before applying *panoRama Tape*.

Apply a strip of the double-face tape *panoRama Tape* onto the bottom and another one at the superior part of the printed material. The **permanent** side of the *panoRama Tape* will therefore be used. Please note that the permanent side is on the inside of the roll.

Leave the liner on the removable side of *panoRama Tape*. Gently burnish the double-side tape on the perforated film with sign maker's plastic squeegee (careful, little pressure).



In order to bring the poster to its application location, you may roll it into tube with printed side on outside.

APPLICATION

Please make sure the backing of the non adhesive perforated film has been removed before applying to the window.

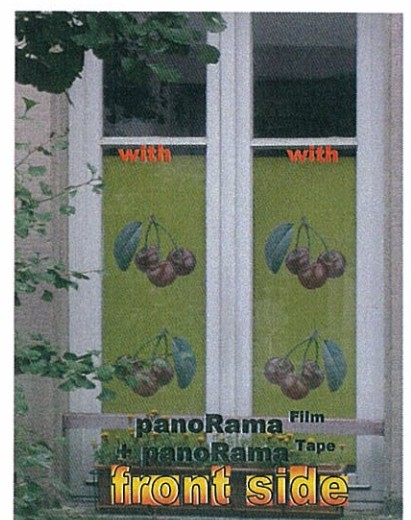
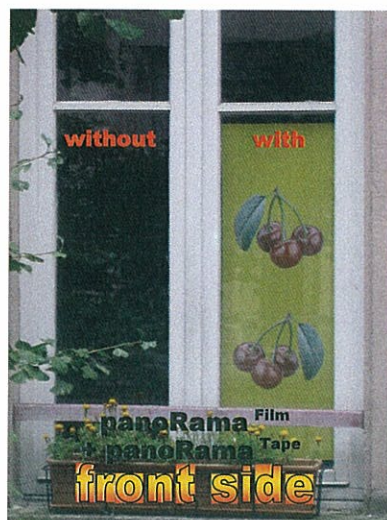
Non-adhesive panoRama window film shall only be applied on dry surfaces. The poster shall not overlap the surface nor shall it be connected to the frame of the window. It is recommended to have 2-3 mm space between the end of the poster and the frame.

Applying and removing of non adhesive **panoRama** products with **panoRama Tape**

For small surfaces, remove **panoRama Tape** liner (so you can apply the removable side of the tape on the window) and apply it on the inside of the glass.

For bigger surfaces:

1. Carefully position the panoRama product so that it is properly aligned on all sides. Attach the poster by use of small tapes onto the window.
2. Remove **panoRama Tape** liner.
3. Using your hand or a soft plastic squeegee, lightly press the film in place.
4. Stretch lightly the graphic to the bottom, and fix it with the second strip of double face tape at the bottom of the graphic.
5. Using a utility knife, carefully trim away any unneeded portion of graphics.
6. If you are installing more than one panel, properly align the next graphic in relation to the adjoining panel(s). In the case of graphics that must seam together, install the two pieces in such a way that the edges of the film butt against each other, with the holes aligned (don't overlap the two edges of the film). Consider a gap of at least 1 mm. Follow the steps 1 through 5 above.
7. Finally, squeegee the film from the centre and work outward in all directions.
8. Take care that the edges are well applied onto the window.
9. In case of difficult applications it can be wise to round the graphic in the edges. This prevents the film to loose tack in the angles of the window. For very big prints, you may also need to apply a strip or little peaces of panoRama ^{Tape} at each side of the print.



Applying and removing of non adhesive panoRama products with panoRama Tape

APPLICATION TEMPERATURE:

The application temperature must be at least +12°C and max. +32°C. These values relate to the outside temperature as well as to temperature on the surface itself on which you are going to mount the window film.

In order to get an optimum tack on the subsurface we recommend that the film (non-adhesive panoRama equipped with panoRama Tape) shall be stored at the same application temperature for a few hours before you start with the application process.

Multipart graphics:

The films never shall overlap each other when creating multipart graphics. They shall be applied in such a way that a gap of approx. 1 mm appears.

REMOVAL

Glass is one of the easiest substrates to work with. Removing the panoRama film should not be a difficult task. Lift a corner of the decals and pull it down slowly. panoRama Tape has been developed to be removable without residues, but if in a rare case there are some adhesive residue on the glass, use a cloth soaked in mild detergent and a plastic squeegee to scrap off the adhesive stains.

**Continental Grafix Ltd. thanks that you have decided to use a panoRama product.
We wish you a lot of success.**

For further information please do not hesitate to contact us.