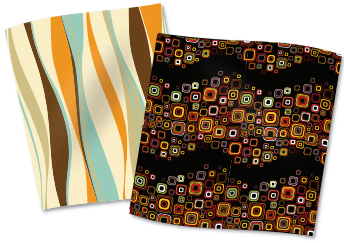


# The ValueJet 1628TD & 2628TD Fabric Printers



**Create Your Vision**

**MUTOH®**



Turn your vision into reality with the ValueJet 1628TD and 2628TD fabric and textile printers for Mutoh.

From concept to printed fabric to custom clothing or upholstery, the ValueJet textile printers put you in control of your product production rather than relying on preprinted fabrics. Let inspiration be your guide.

The ValueJet 1628TD and 2628TD deliver superior line sharpness and photo quality printing with continuous tones, smooth transitions and a wide color gamut. These flexible printers can be utilized with dye sublimation transfer ink, direct print sublimation ink and water-based pigment ink.



The ValueJet 1628TD and 2628TD excel with soft-signage applications such as POP displays, trade show graphics, banners and flags.



Our new 8 channel piezo print head technology makes the images stand out and look sharp to even the most discerning viewers.

- Print fabrics and textiles for trade show graphics, flags, banners, fabrics for custom clothing, fabrics for interior design and more
- Run 2 types of ink simultaneously
- Utilize Mutoh's patented Intelligent Interweave i<sup>2</sup> print technology to virtually eliminate banding
- Print up to 447 sq/ft an hour with the revolutionary dual head design

## MUTOH®

### ValueJet 1628TD - 64"

### ValueJet 2628TD - 104"

Print Method	Drop on Demand Piezo Drive Method	Drop on Demand Piezo Drive Method
<b>Number of Head/Nozzle</b>	(180 nozzles x 8 lines) x Two Heads	(180 nozzles x 8 lines) x Two Heads
<b>Max Print Width</b>	63.2"	103.2"
<b>Max Media Width</b>	64"	104"
<b>Head Height</b>	3 Steps low : 1.5mm middle : 2.5 mm high : 4.0 mm	3 Steps low : 1.5mm middle : 2.5 mm high : 4.0 mm
<b>Type of Ink</b>	Aqueous Ink	Aqueous Ink
<b>Colors</b>	8, 6, 4x2, 4(2 Ink Types)	8, 6, 4x2, 4(2 Ink Types)
<b>Ink Gutter</b>	Yes	Yes
<b>Tension Bar</b>	Yes	Yes
<b>Max Resolution (dpi)</b>	720	720
<b>Print Speed*</b>	Production speeds up to 154 sf/hr Draft quality speed up to 447 sf/h	Production speeds up to 154 sf/hr Draft quality speed up to 447 sf/hr
<b>Take-up System</b>	Standard : 66 lbs Optional : 176 lbs	Standard : 220 lbs
<b>Max Roll Weight</b>	66 lbs (176 lbs. w/ optional HD take up)	220 lbs
<b>Weight (Printer/Stand)</b>	368 / 75 lbs	474 / 90 lbs
<b>Dimensions</b>	106" x 37" x 50"	146" x 37" x 50"
<b>Power Requirements</b>	AC 100-120V	AC 100-120V

The above spec information is tentative and subject to change. \*Print Speeds are estimated figures and subject to change.

#### Mutoh America Inc.

Headquarters  
2602 South 47th Street, Suite 102  
Phoenix, Arizona 85034  
Tel: 480-968-7772 Fax: 480-968-7990

Atlanta: 678-346-0287  
Boston: 781-569-5988  
Chicago: 847-483-9107  
Los Angeles: 310-375-2731

**MUTOH®**  
1-800-99MUTOH • mutoh.com