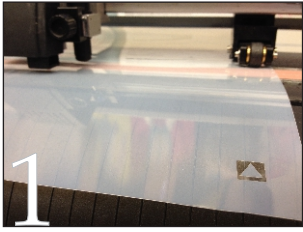
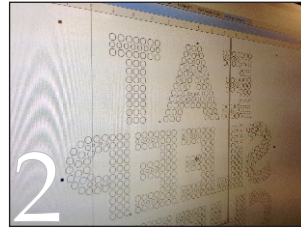


HotMelt SMCCH-100

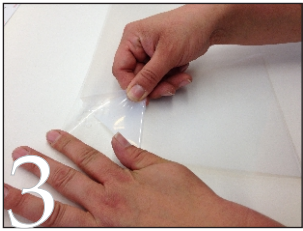
Use with our new textile foils for a beautiful metallic finish.



1 Load roll so the material is rolled out from underneath. Use a 45° blade with very low pressure. Do a cut test until the outer shape weeds out easily around the inner shape.



2 Be sure to reverse the design before plotter cutting.



3 Cut out around your plotted designs and weed the excess from the carrier. The sticky carrier makes it easy to re-stick small details that might pop up during weeding.



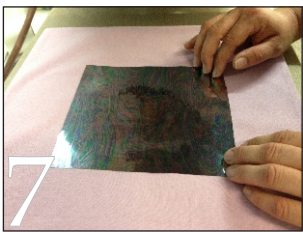
4 Cut a piece of foil that is slightly larger than the HotMelt design and set aside.



5 Heat press the HotMelt onto the fabric at 300°F for 5 seconds.



VERY IMPORTANT: Peel HotMelt carrier warm, almost hot.



7 Carefully place foil over the HotMelt design and make sure it completely covers it. Heat set at 300°F for 10 seconds.



VERY IMPORTANT: Rub with a cloth, allow to cool completely before removing foil sheet.

Love What You Press!

This material can adhere to cotton, uncoated polyester, cotton/polyester, and polyester/acrylic. No nylon.

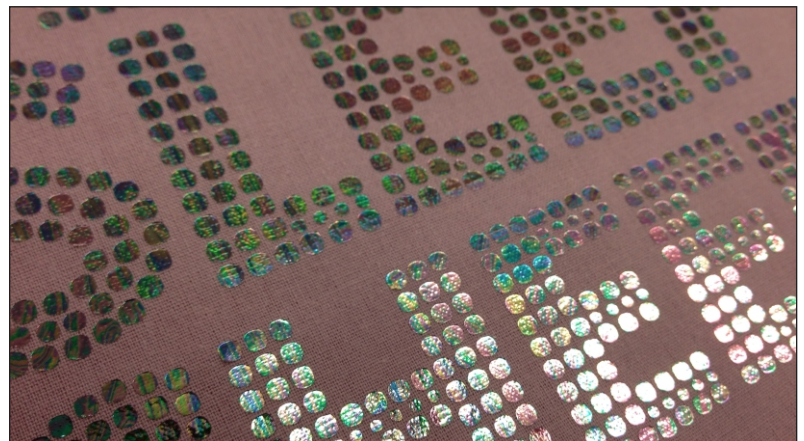


QUALITY DIGITAL SOLUTIONS

#12, 5815 - 40 Street S.E.
Calgary, Alberta, T2C 2H6



403.262.6915 888.235.2838
qualitydigitalsolutions.ca



Technical Support: Toll Free: 877-437-8556 | SpecialtyMaterials.com

Specialty
Materials™

Copyright © 2017, Specialty Materials & Digital Decoration, LLC. All rights reserved. 2929 W. 21st Street, Tulsa, OK 74107 877-437-8556